

**POOLIMPORTER – for fast, efficient, and lower cost securitization**

**Advantages**

*Reduction of ABS transaction costs due to an accelerated and quality-checked data import process.*

In today's ABS markets, originators often mandate arrangers to place large amounts of receivables on the capital market. Consequently, a number of **technological hurdles** must be overcome particularly for an initial issuance.

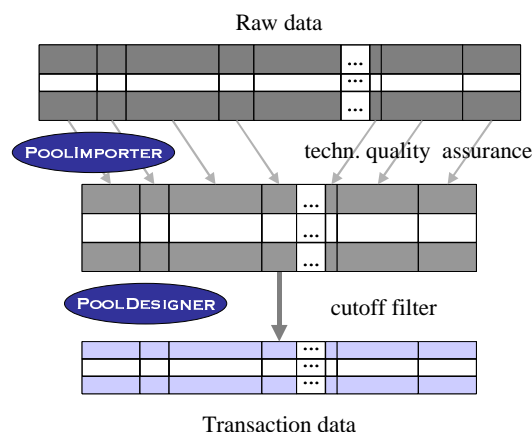
In addition for transactions already placed, cash flows of the underlying assets must be monitored and investor reports generated.

To reduce organizational effort and as a **competitive** advantage for the arranger, flexible and efficient **interfaces** to the originator are a key benefit. This not only increases **transaction speed** but also supports the requisite **transparency** for both sides.

Simultaneously, in order to avoid excessive soft- and hardware maintenance costs, **technological expenditures** for implementing these interfaces at the originator's site must be kept to a **minimum**.

Acrys Consult offers two modules: **POOLIMPORTER** and **POOLDESIGNER** can be used individually or in an integrated fashion. These modules also facilitate a lowering of initial (and subsequent) ABS transaction costs, plus the capability to later expand the level of technological support.

These modules are organized in a two-step manner.



In a first step, **POOLIMPORTER** converts the raw data into a technically clean status (e.g. date format, country specifics as decimal separator) and directs the data into the transaction-relevant columns.

In the second step, **POOLDESIGNER** extracts only the transaction-relevant assets. This filter can be configured freely and applied, for example, to nominal value or maturity date.

Both modules are **Java**-based and therefore completely platform independent. **POOLIMPORTER** is able to interpret all unicode text formats used in Microsoft office applications or systems such as SAP, DATEV, Sage KHK, plus others. **POOLDESIGNER** operates with all common databases having a Java interface. **POOLIMPORTER** is used to import the data.

ACRYS CONSULT  
GMBH & CO. KG

Untermainkai 29-30  
D-60329 Frankfurt

Tel: +49-69-24 45 06-0  
Fax: +49-69-24 45 06-50

ACRYS CONSULT

Schwerzelweg 18  
CH-6315 Oberaegeri

Tel: +41-41-750 7700  
Fax: +41-41-750 7677

ACRYS CONSULT USA

310 Carroll Close  
Tarrytown, NY 10591

Tel: +1-917-533 5216  
Fax: +1-914-206 4254

www.acrys.com

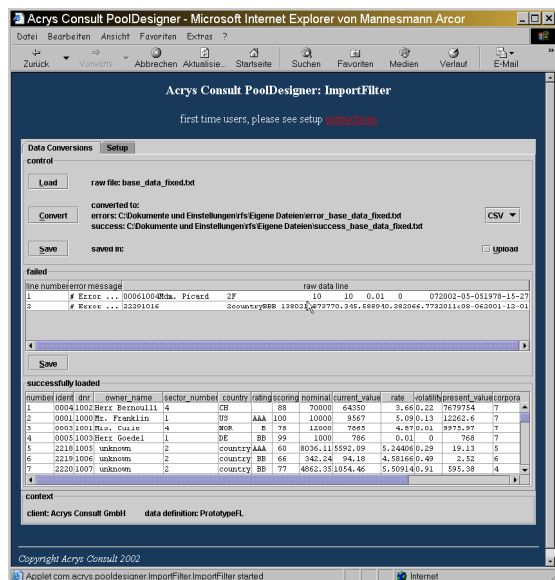
## Details

### **POOLIMPORTER:**

Provides simple File-to-File or File-to-**POOLDESIGNER** conversions with easy definition of data that need only be done once per transaction.

### **Benefits:**

- **Quality check** - only technically clean data is transmitted.
- **Homogeneity** – multi-format data (e.g. currency or date) is transferred into a unique format.
- **Flexibility** - all combinations of raw and transaction data are possible.
- **Online correction** - incorrect data can be corrected immediately.
- **Extendibility** of the data - necessary but non-existing fields can be effortlessly inserted (e.g. currency marks).



Display of errors and converted data

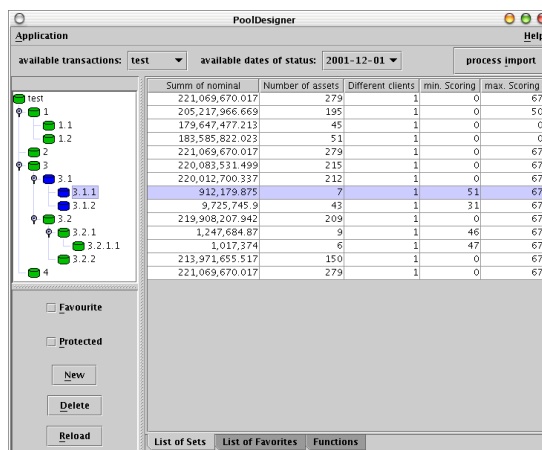
## Technology:

Use of Java allows a central installation at the arranger's site that can be run within a **Browser** or as a WebStart Application by the originator. A purely **single client** installation is also possible.

The implementation effort is minimal as only local files are accessed.

For security purposes, **POOLIMPORTER** is already signed by Acrys - this can also be done by the originator free of charge.

### **POOLDESIGNER:**



### *File structure of the transaction pool*

The filters, which are readily configurable, on the one hand facilitate an asset **analysis** and on the other ensure a high degree of **data security** as only transaction-relevant asset data are extracted. Should additional fields not present in the originator's systems be needed, these can be simply calculated.

Further information regarding **POOLDESIGNER** can be found in a separate Acrys flyer and white paper.

**Please contact us with questions or for assistance, including an on-site demonstration.**

YOU CAN'T STAY AHEAD BY STANDING STILL.

Acrys Consult is a business and IT-consultancy to specialists in finance and industry

**ACRYS CONSULT  
GMBH & Co. KG**

Untermainkai 29-30  
D-60329 Frankfurt

Tel: +49-69-24 45 06-0  
Fax: +49-69-24 45 06-50

**ACRYS CONSULT**

Schwerzelweg 18  
CH-6315 Oberaegeri

Tel: +41-41-750 7700  
Fax: +41-41-750 7677

**ACRYS CONSULT USA**

310 Carroll Close  
Tarrytown, NY 10591

Tel: +1-917-533 5216  
Fax: +1-914-206 4254

www.acrys.com