

## POOLIMPORTER – for fast, efficient and lower cost securitization

### Advantages

*Reduction of ABS transaction costs via increase in speed and quality assurance of data delivery.*

In today's ABS markets, originators often mandate arrangers to place large amounts of receivables on the capital market. Consequently, a number of **technological hurdles** must be overcome particularly for an initial issuance.

Usually, originators do not operate systems compatible with those of the arranger, or are reluctant to provide all of their asset data given that only a portion of the assets are being securitized.

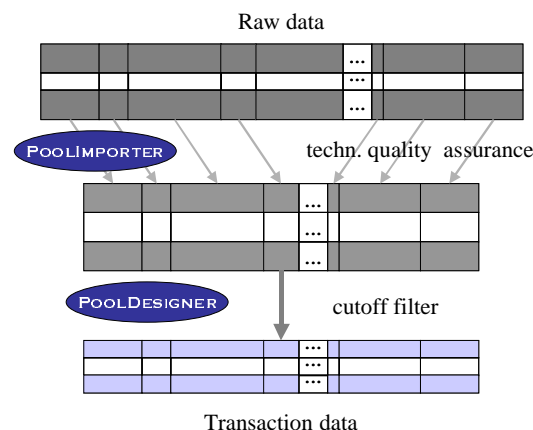
In addition for transactions already placed, cash flows of the underlying assets must be monitored and investor reports generated.

To minimize organizational effort and thus transaction costs, flexible and efficient **interfaces** between the systems of originator and arranger are essential. This not only increases **transaction speed** but also supports the requisite **transparency** for both sides.

Simultaneously, in order to avoid excessive soft- and hardware maintenance costs, **technological expenditures** for implementing these interfaces at the originator's site must be kept to a **minimum**.

For this, Acrys Consult offers two modules - **POOLIMPORTER** and **POOLDESIGNER**, usable either as stand-alone or integrated applications. These modules in particular also facilitate lower initial (and subsequent) transaction costs and offer the capability to later expand technological support.

The modules are arranged on two functional levels.



On the first level, raw data is converted into a technically faultless form (e.g. date formats, country-specific decimal delimiters) and is directed to the transaction-relevant columns using **POOLIMPORTER**.

On the second level, the data may be cut to the transaction-relevant receivables using **POOLDESIGNER**. These freely configurable filters may, for example, also be applied to nominal values or time to maturity.

Due to their 100% **Java** code, both modules are totally **platform independent**. **POOLIMPORTER** is able to interpret all unicode text formats that are available from Microsoft Office applications or systems such as SAP, DATEV, SAGE KHK, and others.

**POOLDESIGNER** works with all common databases that offer a Java interface. **POOLIMPORTER** is used to import the data.

ACRYS CONSULT  
GMBH & CO. KG

UNTERMAINKAU 29-30  
D-60329 FRANKFURT

TEL: +49-69-24 45 06-0  
FAX: +49-69-24 45 06-50

ACRYS CONSULT

SCHWERZELWEG 18  
CH-6315 OBERAEGGERI

TEL: +41-41-750 7700  
FAX: +41-41-750 7677

ACRYS CONSULT USA

310 CARROLL CLOSE  
TARRYTOWN, NY 10591

TEL: +1-917-533 5216  
FAX: +1-914-206 4254

WWW.ACRYS.COM

**Details**

**POOLIMPORTER:**

Allows easy File-to-File or File-to-**POOLDESIGNER** conversion, including effortless definition of data which is required only once per transaction.

**Benefits:**

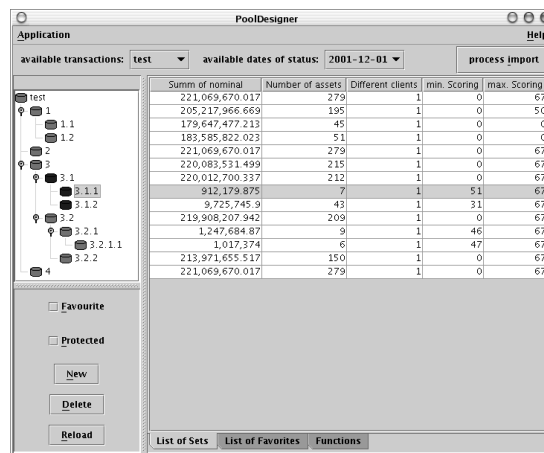
- **Quality assurance** - only technically faultless data is transmitted.
- **Homogeneity** - data with different formats (e.g. difference in dates or currencies) is transformed into a single format.
- **Flexibility** - all combinations of raw to transaction data are possible.
- **Online correction** - faulty data can be directly corrected.
- **Extendibility** of data - needed but non-existing fields (e.g. currency labels) can be simply inserted.

**Technology:**

Use of a Java interface enables a central installation with execution inside a **Browser** or as a WebStart application. An independent **single client installation** is also possible.

The implementation effort is minimal as only local files are accessed. For security reasons, **POOLIMPORTER** is already **signed** by Acrys - but this can also be done by the originator without additional cost.

**POOLDESIGNER:**



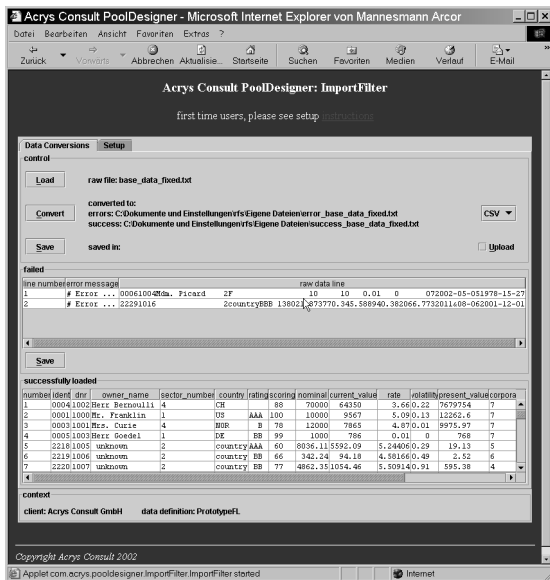
*File structure of transaction pools*

Easy-to-define data filters allow own **analysis** of the assets on the one hand and **data privacy** on the other, since only receivables relevant to the transaction are extracted.

Additional fields not obtainable from the originator's systems can be readily calculated.

Further information regarding **POOLDESIGNER** can be found in a separate Acrys flyer and white paper.

**Please contact us with questions or for assistance, including an on-site demonstration.**



*Display of faulty and converted data*

**YOU CAN'T STAY AHEAD BY STANDING STILL**

Acrys Consult is your competent business and IT-consultancy.

**ACRYS CONSULT  
GMBH & CO. KG**  
UNTERMAINKAI 29-30  
D-60329 FRANKFURT  
TEL: +49-69-24 45 06-0  
FAX: +49-69-24 45 06-50

**ACRYS CONSULT**  
SCHWERZELWEG 18  
CH-6315 OBERAEGERI  
TEL: +41-41-750 7700  
FAX: +41-41-750 7677

**ACRYS CONSULT USA**  
310 CARROLL CLOSE  
TARRYTOWN, NY 10591  
TEL: +1-917-533 5216  
FAX: +1-914-206 4254

WWW.ACRYS.COM